

Sb-Y (Antimony-Yttrium)

H. Okamoto

The Sb-Y phase diagram in [Massalski2] was redrawn from [1970Sch]. Phase boundaries were drawn to follow observed experimental data point. [2009Zha] proposed the Sb-Y phase diagram by using these data points as the basis of their thermodynamic model. The result is shown in Fig. 1.

References

- 1970Sch:** F.A. Schmidt and O.D. McMasters, Yttrium-Antimony Alloy System, *J. Less-Common Met.*, 1970, **21**(4), p 415-425
2009Zha: L.G. Zhang, H.M. Chen, H.Q. Dong, G.X. Huang, L.B. Liu, and Z.P. Jin, Thermodynamic Description of the Al-Sb-Y System, *J. Alloys Compd.*, 2009, **475**, p 233-237

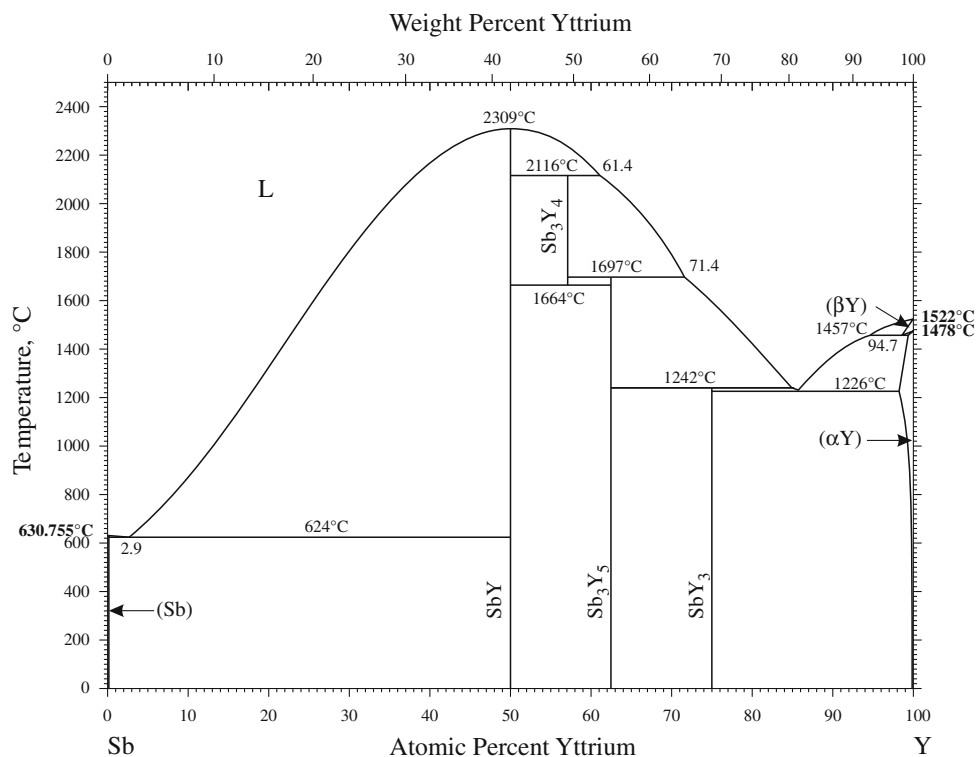


Fig. 1 Sb-Y phase diagram